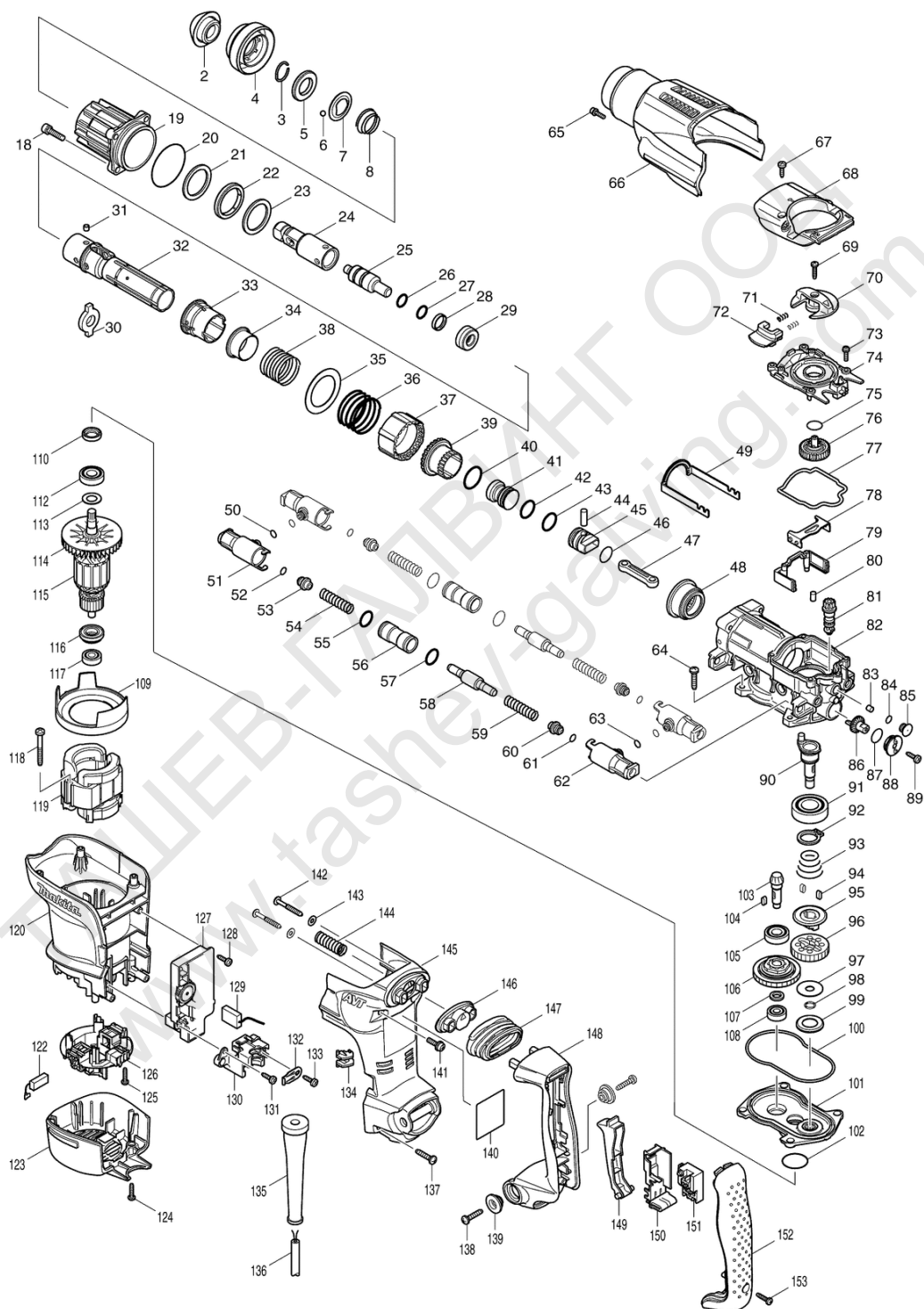


Makita Service Information / Model: HR3210C



| POS | Bestell-Nr. | Artikelbeschreibung | Stk. |
|-----|-------------|--------------------------------|------|
| 2 | 286282-0 | WERKZEUGHALTER-KAPPE | 1 |
| 3 | 233940-9 | FEDERRING HR2440/50/2020/1830 | 1 |
| 4 | 450245-4 | BOHRFUTTERDECKEL HR3200C Serie | 1 |
| 5 | 257288-5 | RING 21 HR3200C/10C/10FCT | 1 |
| 6 | 216022-2 | STAHLKUGEL 7.0 BHR241 | 2 |
| 7 | 345873-7 | FÜHRUNGSSCHEIBE HR3200C Serie | 1 |
| 8 | 234049-0 | DRUCKFEDER 22-32 HR3200C-Serie | 1 |
| 18 | 922341-3 | INBUSSCHRAUBE M6x25 HR3541FC | 4 |
| 19 | 158533-0 | VORDERGEHÄUSE | 1 |
| 20 | 213656-2 | O-RING 53 HM1200/HR5000/3540C | 1 |
| 21 | 267810-0 | SCHEIBE 34 HR3510/HR3520 | 1 |
| 22 | 262138-1 | RING 35 HR3200C/10C/10FCT | 1 |
| 23 | 267810-0 | SCHEIBE 34 HR3510/HR3520 | 1 |
| 24 | 324840-5 | WERKZEUGHALTER HR3200C/10C | 1 |
| 25 | 324849-7 | SCHLAGBOLZEN HR3200C/HR3210C | 1 |
| 26 | 213228-3 | O-RING 15 HR3000C/HR3550C | 1 |
| 27 | 213228-3 | O-RING 15 HR3000C/HR3550C | 1 |
| 28 | 213321-3 | SPEZIALRING 20 HR3000/3550C | 1 |
| 29 | 424062-8 | GUMMIRING 13 HR3200C Serie | 1 |
| 30 | 324838-2 | GLEITPLATTE HR3210FCT/3540C | 1 |
| 31 | 256266-2 | STIFT 6 HK1820 | 4 |
| 32 | 331794-9 | ZYLINDER 25 HR3200C/10C/10FCT | 1 |
| 33 | 450243-8 | GLEITHÜLSE HR3200C Serie | 1 |
| 34 | 331805-0 | RING 29 HR3200C/10C/10FCT | 1 |
| 35 | 267360-5 | SCHEIBE 40 HR3200C/10C/10FCT | 1 |
| 36 | 234052-1 | DRUCKFEDER 42 HR3200C-Serie | 1 |
| 37 | 450236-5 | FIXIERRING HR3200C Serie | 1 |
| 38 | 234050-5 | DRUCKFEDER 34 HR3200C-Serie | 1 |
| 39 | 331795-7 | ANTRIEBSHÜLSE HR3200-Serie | 1 |
| 40 | 213434-0 | O-RING 26 5621RDWA/BSS610SF | 1 |
| 41 | 324858-6 | SCHLÄGER HR3200C/10C/10FCT | 1 |
| 42 | 213283-5 | O-RING 18 HR3200C/10C/10FCT | 1 |
| 43 | 213283-5 | O-RING 18 HR3200C/10C/10FCT | 1 |
| 44 | 256087-2 | STIFT 7 HR3210FCT/HK1820L | 1 |
| 45 | 324918-4 | KOLBEN HR3210FCT/3540C/41FC | 1 |
| 46 | 213262-3 | O-RING 18 4101R/HR4011C/AN923 | 1 |
| 47 | 450235-7 | PLEUEL HR3200C/10C/10FCT | 1 |
| 48 | 227531-6 | ZAHNRAD 37 HR3200C/10C/10FCT | 1 |
| 49 | 345867-2 | SCHEIBENSCHUTZBÜGEL HM3541C | 1 |
| 50 | 213030-4 | O-RING 8 RP0910/1110C/HR4011 | 2 |

| POS | Bestell-Nr. | Artikelbeschreibung | Stk. |
|------|-------------|---|------|
| 51 | 450248-8 | ROHRHALTER HR3210C/HR3210FCT | 2 |
| 52 | 213030-4 | O-RING 8 RP0910/1110C/HR4011 | 2 |
| 53 | 450239-9 | FEDERFÜHRUNG HR3210C/10FCT | 2 |
| 54 | 234048-2 | DRUCKFEDER 10 HR3200C/10C/10FC | 2 |
| 55 | 213275-4 | O-RING 18 BFL400F/HR4011/4010C | 2 |
| 56 | 331800-0 | ROHR 15 HR3210C/FCT/3541FCT | 2 |
| 57 | 213275-4 | O-RING 18 BFL400F/HR4011/4010C | 2 |
| 58 | 324862-5 | GEGENGEWICHT HR3210C/FCT | 2 |
| 59 | 234048-2 | DRUCKFEDER 10 HR3200C/10C/10FC | 2 |
| 60 | 450239-9 | FEDERFÜHRUNG HR3210C/10FCT | 2 |
| 61 | 213030-4 | O-RING 8 RP0910/1110C/HR4011 | 2 |
| 62 | 450248-8 | ROHRHALTER HR3210C/HR3210FCT | 2 |
| 63 | 213030-4 | O-RING 8 RP0910/1110C/HR4011 | 2 |
| 64 | 266041-8 | SELBSTSCHN. SCHRAU.5x25 HM3541 | 4 |
| 65 | 922123-3 | INBUSSCHRAUBE M4x14 DCS230T | 1 |
| 66 | 450254-3 | KURBELGEHÄUSEDECKEL | 1 |
| 67 | 266192-7 | SELBSTSCHN.SCHRAU. 4x14 HM3541 | 2 |
| 68 | 318201-9 | GETRIEBE GEH.-DECKEL HM3541FC | 1 |
| 69 | 265995-6 | SELBSTSCHN.SCHRA 4x18 BO5030 | 1 |
| 70 | 450249-6 | UMSCHALTER HR3200C Serie | 1 |
| 71 | 233436-0 | DRUCKFEDER 3 HR4011C-Serie | 2 |
| 72 | 450250-1 | ARRETIERKNOPF HR3200 Serie | 1 |
| 73 | 911128-8 | SCHRAUBE M4x16 HM3541FC | 5 |
| 74 | 450241-2 | GETRIEBE GEH.-DECKEL HM3541FC | 1 |
| 75 | 213223-3 | O-RING 16 9036/HR3540C/41FC | 1 |
| 76 | 158437-6 | ZAHNRAD 33 HR3200C/10C/10FCT | 1 |
| 77 | 424064-4 | Dichtungsring B HM3541FC | 1 |
| 78 | 345868-0 | BÜGELPLATTE HR3200C/10C/10FCT | 1 |
| 79 | 450247-0 | ROHR HR3200C/10C/10FCT/3540C | 1 |
| 80 | 263005-3 | GUMMISTIFT 6 HM3541FC | 2 |
| 81 | 450242-0 | GETRIEBEACHSE HR3200C-Serie | 1 |
| 81.2 | 452126-8 | GETRIEBEACHSE HR3200C-Serie | 1 |
| 82 | 158531-4 | GETRIEBEGEHÄUSE HR3210C/FCT | 1 |
| 82.2 | 158712-0 | Getriebegeh. HR3541FC | 1 |
| 82.3 | 158712-0 | Getriebegeh. HR3541FC | 1 |
| 83 | 443138-2 | FILTER HR3200C/10C/10FCT/3540 | 1 |
| 84 | 213030-4 | O-RING 8 RP0910/1110C/HR4011 | 1 |
| 85 | 450238-1 | FILTER KAPPE HM3541FC | 1 |
| 86 | 450244-6 | ZAHNRAD HR3200C Serie | 1 |
| 87 | 213223-3 | O-RING 16 9036/HR3540C/41FC | 1 |

| POS | Bestell-Nr. | Artikelbeschreibung | Stk. |
|------|-------------|-------------------------------------|------|
| 87.2 | 213176-6 | O-RING 14 AN923/943 | 1 |
| 88 | 450237-3 | KAPPENHALTER HR3200C Serie | 1 |
| 89 | 266192-7 | SELBSTSCHN.SCHRAU. 4x14 HM3541 | 1 |
| 90 | 324839-0 | KURBELWELLE HR3210FCT/3540C | 1 |
| 91 | 211332-2 | KUGELLAGER 6004LLU HM3541FC | 1 |
| 92 | 961060-6 | SEEGERING S-20 HM3541FC | 1 |
| 93 | 231991-6 | DRUCKFE.KONISCH 21-31 HM3541FC | 1 |
| 94 | 254239-9 | KEIL 4 HR3000C/HR3550C/3540C | 2 |
| 95 | 324848-9 | KUPPLUNG HR3210FCT/3540C/41FC | 1 |
| 96 | 227188-3 | ZAHNRAD 33 HR3200C/10C/10FCT | 1 |
| 97 | 253197-6 | U-SCHEIBE 10 LF1000/7104L | 1 |
| 98 | 961036-3 | SEEGERING HR3200C Serie | 1 |
| 99 | 345869-8 | ABDECKKAPPE 18 HM3541FC | 1 |
| 100 | 424063-6 | Dichtungsring A HM3541FC | 1 |
| 101 | 158534-8 | GETRIEBEGEHÄUSE KOMPL.HM3541FC | 1 |
| 102 | 213415-4 | O-RING 28 HM1100C/9403/HM1140 | 1 |
| 103 | 227533-2 | ZAHNRAD 9 HR3200C/10C/10FCT | 1 |
| 104 | 254239-9 | KEIL 4 HR3000C/HR3550C/3540C | 1 |
| 105 | 210105-0 | KUGELLAGER 60001LLU PW5000CH | 1 |
| 106 | 125421-6 | RUTSCHKUPPLUNG HR3200C/10C/FCT | 1 |
| 107 | 257291-6 | RING 10 HR3200C/10C/10FCT | 1 |
| 108 | 210005-4 | KUGELLAGER 608DDW HM3541FC | 1 |
| 109 | 450251-9 | LUFTABLEITPLATTE HR3200C Serie | 1 |
| 110 | 213133-4 | SIMMERRING 12 HR2800/3540C | 1 |
| 112 | 210105-0 | KUGELLAGER 60001LLU PW5000CH | 1 |
| 113 | 253084-9 | SCHEIBE 12 HM3541FC | 1 |
| 114 | 241863-7 | LÜFTERRAD 70 HR3000C/3550C/J | 1 |
| 115 | 513748-0 | ANKER KOMPL.220-240V HM3541FC | 1 |
| 115 | | *** INC. 112-114,116,117 | |
| 116 | 681650-6 | ISOLIERSCHEIBE HM3541FC | 1 |
| 117 | 210005-4 | KUGELLAGER 608DDW HM3541FC | 1 |
| 118 | 266056-5 | SELBSTSCHN.SCHRA 5x45 HM3541 | 2 |
| 119 | 625813-4 | FELD HR3210FCT/3540C/41FC | 1 |
| 120 | 450252-7 | MOTORGEHÄUSE HR3200C/10FCT | 1 |
| 122 | 194160-9 | KOHLN CB-350 HR4011C-Serie | 1 |
| 123 | 450253-5 | MOTORGEHÄUSEDECKEL HR3200C/10 | 1 |
| 124 | 265995-6 | SELBSTSCHN.SCHRA 4x18 BO5030 | 2 |
| 125 | 265995-6 | SELBSTSCHN.SCHRA 4x18 BO5030 | 4 |
| 126 | 638519-5 | KOHLNHALTER HR3210FCT | 1 |
| 127 | 631784-5 | REGELELEKTRONIK HR3200C/10C | 1 |

| POS | Bestell-Nr. | Artikelbeschreibung | Stk. |
|--------|-------------|---|------|
| 128 | 266192-7 | SELBSTSCHN.SCHRAU. 4x14 HM3541 | 1 |
| 129 | 638406-8 | ANSCHLUSSDRAHT HR4011C/3540C | 1 |
| 130 | 450246-2 | HALTERUNG HR3200C-Serie | 1 |
| 131 | 266192-7 | SELBSTSCHN.SCHRAU. 4x14 HM3541 | 1 |
| 132 | 687169-3 | KABELKLEMMPLATTE HP1620/1621/ | 1 |
| 133 | 266192-7 | SELBSTSCHN.SCHRAU. 4x14 HM3541 | 1 |
| 134 | 450240-4 | LINSE HR3200C-Serie | 1 |
| 135 | 682560-0 | KABELSCHUTZ 10 HM3541FC | 1 |
| 136 | 695123-3 | KABEL 1.5-2-4.0 KP312S | 1 |
| 137 | 266041-8 | SELBSTSCHN. SCHRAU.5x25 HM3541 | 2 |
| 138 | 266041-8 | SELBSTSCHN. SCHRAU.5x25 HM3541 | 2 |
| 139 | 450352-3 | Ansatzhülse HR3210C/10FCT | 2 |
| 140 | 864538-7 | HR3210C NAME PLATE | 1 |
| 141 | 911233-1 | SCHRAUBE M5x20 HR3541FC | 2 |
| 142 | 266211-9 | SELBSTSCHNEID.SCHRAUBE 5x40 | 2 |
| 143 | 267066-5 | SCHEIBE 5 HR4011C/3541FC | 2 |
| 144 | 234051-3 | DRUCKFEDER 11 HR3200C-Serie | 1 |
| 145 | 450255-1 | GRIFFHALTER HR3210C/FCT | 1 |
| 146 | 419014-2 | HALTERUNG HR4011C/3541FC | 1 |
| 147 | 421912-8 | STAUBSCHUTZ HR4011C/3541FC | 1 |
| 148 | 450256-9 | HANDGRIFF HR3210C/HR3210FCT | 1 |
| 149 | 419025-7 | SCHALTERHEBEL HR4011C/HR5211C | 1 |
| 150 | 154626-1 | SCHALTERHALTER. HR4011C-Serie | 1 |
| 151 | 650567-4 | SCHALTER HR4011C-Serie | 1 |
| 152 | 450257-7 | GRIFFDECKEL HR3200C/10C/10FCT | 1 |
| 153 | 265995-6 | SELBSTSCHN.SCHRA 4x18 BO5030 | 1 |
| 154 | 267383-3 | SCHEIBE 22 HR3540C/41FC | 1 |
| 155 | 267721-9 | Klemmscheibe HR3200C-Serien | 1 |
| 156 | 213083-3 | O-RING 9 HR3200C,3210C u.FCT | 1 |
| 1001 | 181573-3 | Fett f.Bohrer&Meißelsch HR3541 | 1 |
| 1001.2 | 194683-7 | Fett f. Bohrer & Meißelschaft | 1 |
| 1002 | 135197-7 | Stabseitengriff HR3200C-Serie | 1 |
| 1003 | 824825-6 | Transportkoffer HR3210C/FCT | 1 |
| 1004 | 810409-6 | VORSCHRIFTS-AUFKLEBER HR3541FC | 1 |
| 1005 | 806480-6 | HR3210C MODEL NO.LABEL | 1 |